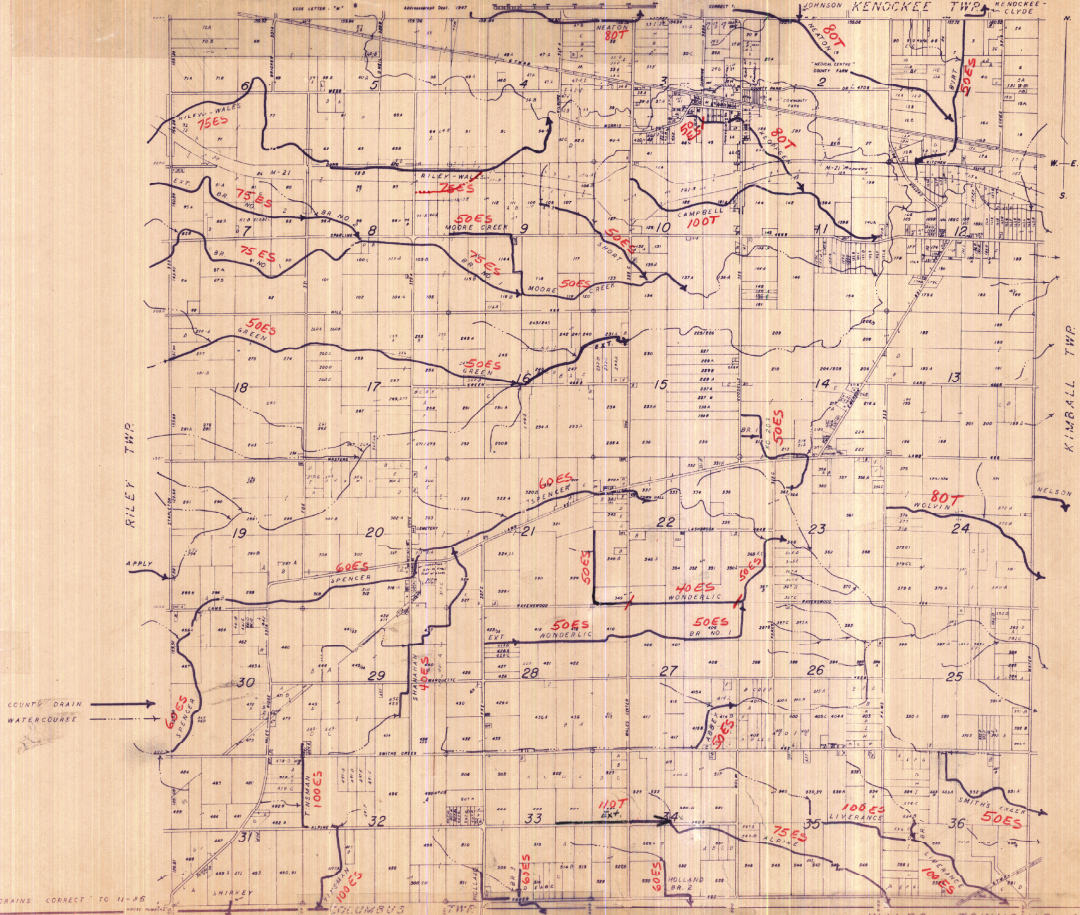


WALES TOWNSHIP T. & R. 15 E. ST. CLAIR COUNTY, MICH.

SCALE 1" = 2000'

ESTABLISHED COUNTY DRAINS

JOHNSON KENOSKEE TWP. HENDRICKS - M. CLYDE



DRAINS CORRECT TO 11-15

WALES TOWNSHIP

M

74